

**DESCRIPTION:**

AMC MODEL SWNLC-DC20-1DT IS A SINGLE POLE SINGLE THROW, NON-REFLECTIVE/ABSORPTIVE SWITCH MODULE WITH VERY LOW INSERTION LOSS, HIGH SPEED AND WITH INTEGRAL TTL DRIVER, DESIGNED FOR DC TO 20 GHz OPERATION.

REVISIONS				
ZONE	REV.	DESCRIPTION	DATE	APPROVED
	A	SEE ER# 069-11	11/1/2011	RA

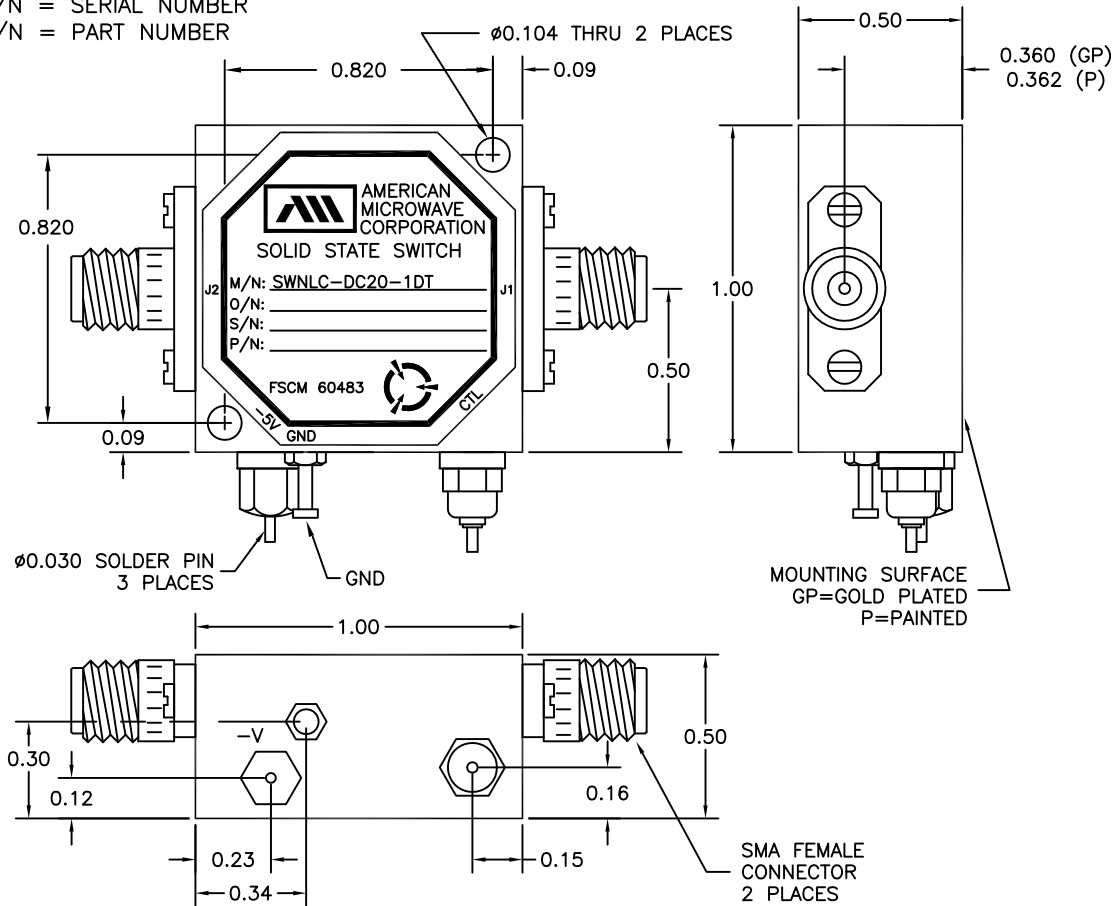
**SPECIFICATIONS:**

- FREQUENCY: DC GHz TO 20 GHz
- INSERTION LOSS: 3.0 dB MAXIMUM @ 20 GHz
- ISOLATION: 40 dB MINIMUM
- VSWR: ABSORPTIVE IN/OUT: 2.0:1  
ABSORPTIVE OUT/OFF: 2.0:1
- SPEED: RISE: 5nSec MAXIMUM  
FALL: 5nSec MAXIMUM  
DELAY ON: 25nSec MAXIMUM  
DELAY OFF: 25nSec MAXIMUM
- POWER INPUT: (CW)+18dBm (STANDARD)
- IIP3 (MIN.): 43 dBm MIN. 100 MHz SPACING 2 dBm INPUT
- IIP2 (MIN.): 73 dBm MIN. 100 MHz SPACING 2 dBm INPUT
- CONTROL: TTL LOGIC "0"=ON "1"=OFF
- POWER SUPPLY: -5V @ 50 mA MAXIMUM

**OPTIONS:**

- B01: -12V POWER SUPPLIES
- B02: -15V POWER SUPPLIES
- B03: REVERSE LOGIC "1"=ON "0"=OFF

M/N = MANUFACTURER PART NUMBER  
 O/N = OPTION NUMBER  
 S/N = SERIAL NUMBER  
 P/N = PART NUMBER



**ENVIRONMENTAL RATINGS:**

- TEMPERATURE: -40°C TO +85°C (OPERATING)  
-40°C TO +150°C (STORAGE)
- HUMIDITY: MIL-STD-202F, METHOD 103B COND. B
- SHOCK: MIL-STD-202F, METHOD 213B COND. B
- VIBRATION: MIL-STD-202F, METHOD 204D COND. B
- ALTITUDE: MIL-STD-202F, METHOD 105C COND. B
- TEMPERATURE CYCLE: MIL-STD-202F, METHOD 107D COND. A

NOTE: THE ABOVE SPECIFICATIONS ARE SUBJECT TO CHANGE OR REVISION  
 \* Units are designed to meet Environmental ratings but not tested. If Environmental Testing is required, please contact Sales Department.

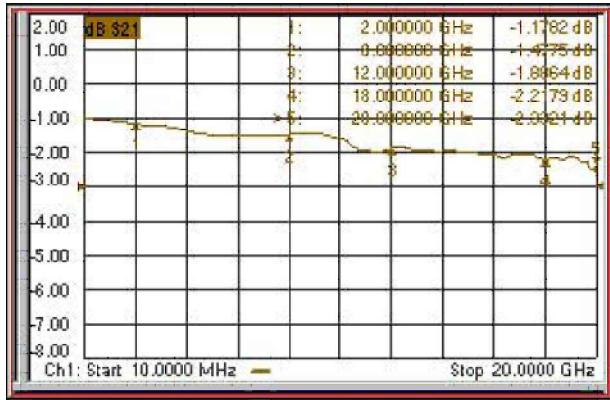
ALL DIMENSIONS ARE IN INCHES  
 TOLERANCES:  
 X.XX ±0.020  
 X.XXX ±0.010

APPROVALS		DATE	AMERICAN MICROWAVE CORPORATION FREDERICK, MARYLAND		
DRAWN	<i>R. AFABLE</i>	11/1/11	TITLE PRODUCT FEATURE SWNLC-DC20-1DT		
ENG	<i>RA</i>	11/1/11			
QAE	<i>K. JIMMY</i>	11/1/11	SIZE	FSCM NO.	DWG NO.
			A	60483	100-8144
			SCALE	N/S	SHEET 1 of 2
					REV. A

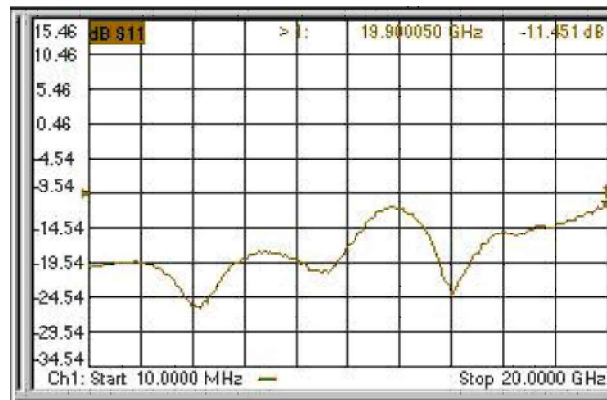
**DESCRIPTION:**

AMC MODEL SWNLC-DC-1DT IS A SINGLE POLE SINGLE THROW, NON-REFLECTIVE/ABSORPTIVE SWITCH MODULE WITH VERY LOW INSERTION LOSS, HIGH SPEED AND WITH INTEGRAL TTL DRIVER, DESIGNED FOR DC TO 20 GHz OPERATION.

REVISIONS				
ZONE	REV.	DESCRIPTION	DATE	APPROVED
	A	SEE ER# 069-10	11/1/11	RA



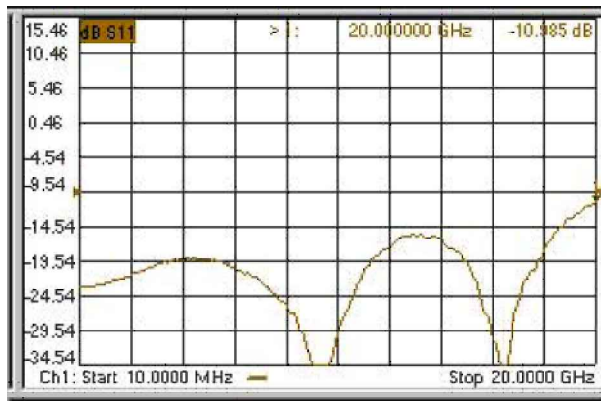
INSERTION LOSS



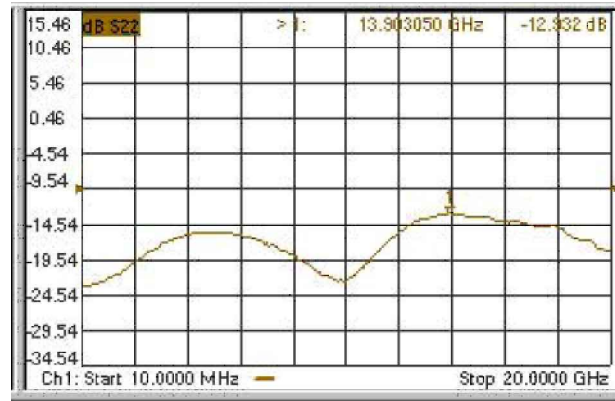
INPUT VSWR



OUTPUT VSWR



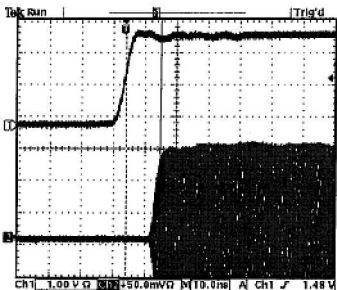
INPUT OFF VSWR



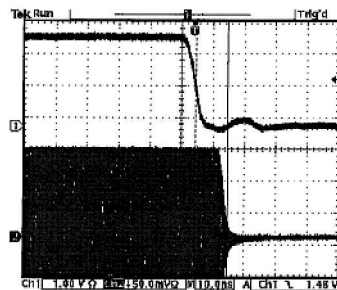
OUTPUT OFF VSWR



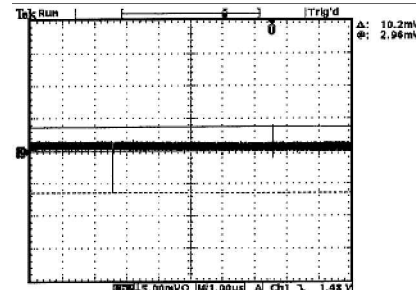
ISOLATION



SWITCHING SPEED, DELAY ON



SWITCHING SPEED, DELAY OFF



VIDEO TRANSIENT

APPROVALS		DATE	AMERICAN MICROWAVE CORPORATION FREDERICK, MARYLAND	
DRAWN <i>R. AFABLE</i>		11/1/11	TITLE PRODUCT FEATURE SWNLC-DC20-1DT	
ENG <i>RA</i>		11/1/11	SIZE A	PFCM NO. 60483
ONE <i>K. SPANNS</i>		11/1/11	DWG NO. 100-8144	REV. A
SCALE N/S			SHEET 2 of 2	