

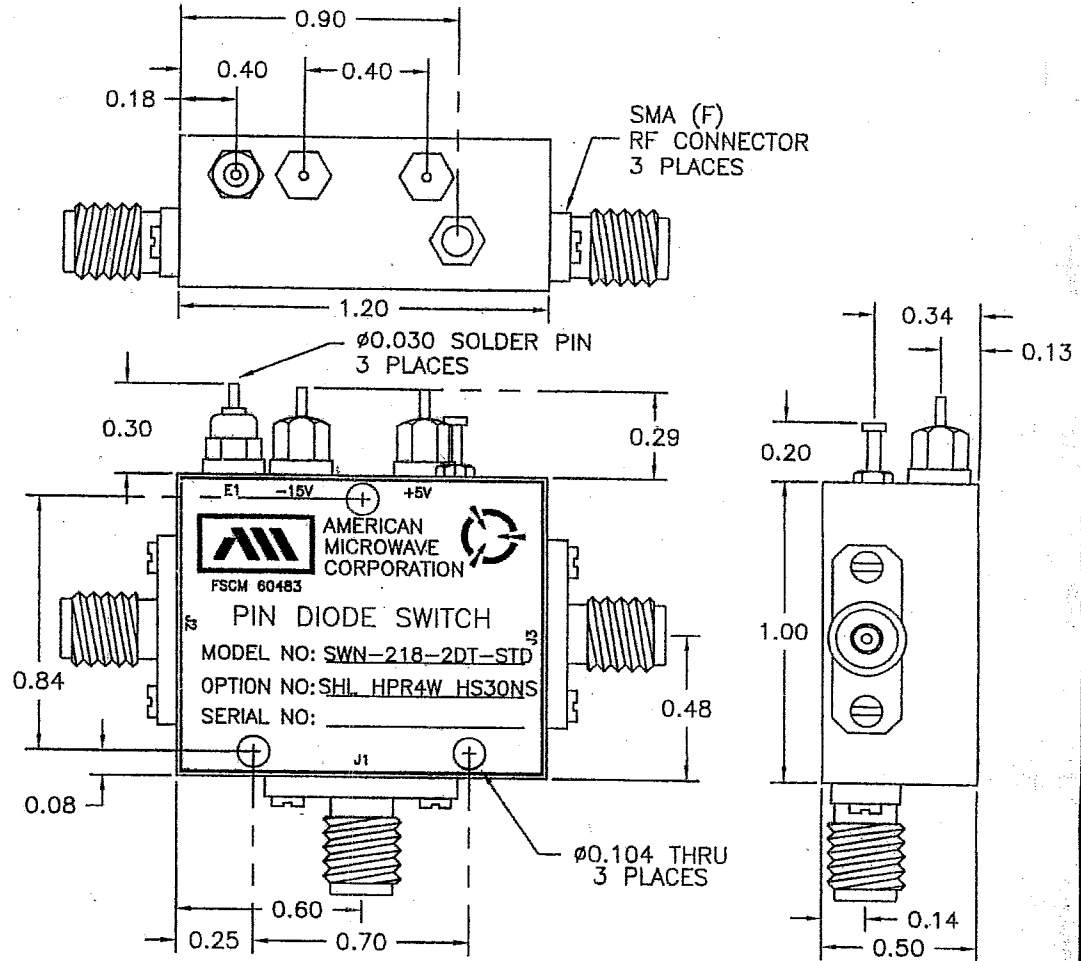
DESCRIPTION:

AMC MODEL SWN-218-2DT-STANDARD OPTIONS SHL, HPR4W, HS30NS IS A SINGLE POLE TWO THROW, HIGH POWER (4 WATTS), HIGH SPEED TERMINATED SWITCH MODULE WITH LOW INSERTION LOSS, HIGH ISOLATION, AND INTEGRAL TTL DRIVER, DESIGNED FOR 600 MHz TO 1.3 GHz OPERATION.

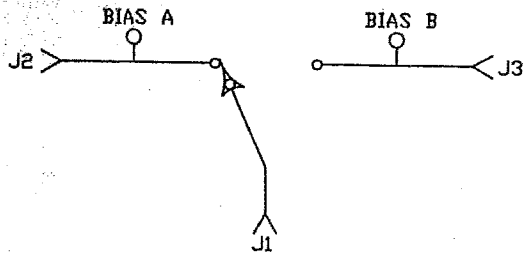
| ZONE | | REV. | DESCRIPTION | DATE | APPROVED |
|------|--|------|--------------------------|----------|----------|
| | | | ORIGINAL JOB# 204067XE-2 | 05/07/02 | |

SPECIFICATIONS:

- FREQUENCY: 600 MHz TO 1.3 GHz
- INSERTION LOSS: 1.5 dB
- ISOLATION: 70 dB
- VSWR (ALL PORTS): 1.5:1
- SWITCHING SPEED: DELAY ON: 30 nS
DELAY OFF: 30 nS
- RF POWER: 4 WATTS
- CONTROL: TTL SINGLE ENDED 1 BIT
- POWER SUPPLY: +5 VDC @ 100 mA MAXIMUM
-15 VDC @ 100 mA MAXIMUM
- CONNECTORS (RF): SMA FEMALE, 3 PLACES
- CONNECTORS (POWER): SOLDER PINS
- CONNECTORS (CONTROL): SOLDER PINS
- LOGIC "0": J1 TO J2
- LOGIC "1": J1 TO J3
- SIZE: 1.20" (L) x 1.00" (W) x 0.50" (H)
- WEIGHT: 1.5 OUNCE TYPICAL



BLOCK DIAGRAM



ENVIRONMENTAL RATINGS:

- TEMPERATURE: -55°C TO +85°C (OPERATING)
-65°C TO +125°C (STORAGE)
- HUMIDITY: MIL-STD-202F, METHOD 103B COND. B
- SHOCK: MIL-STD-202F, METHOD 213B COND. B
- VIBRATION: MIL-STD-202F, METHOD 204D COND. B
- ALTITUDE: MIL-STD-202F, METHOD 105C COND. B
- TEMPERATURE CYCLE: MIL-STD-202F, METHOD 107D COND. A

NOTE: THE ABOVE SPECIFICATIONS ARE SUBJECT TO CHANGE OR REVISION

ALL DIMENSIONS ARE IN INCHES
TOLERANCES:

X.XX ±0.020

X.XXX ±0.010

CONFIDENTIAL AND PROPRIETARY

| | | | | |
|-----------|------------|----------|--|----------|
| APPROVALS | | DATE | AMERICAN MICROWAVE CORPORATION FREDERICK, MARYLAND | |
| DRAWN | <i>KAB</i> | 05/07/02 | TITLE PRODUCT FEATURE SWN-218-2DT-STANDARD OPTIONS SHL, HPR4W, HS30NS | |
| CHECKED | <i>LP</i> | 7/20/02 | SIZE | FSCM NO. |
| ISSUED | | | A | 60483 |
| | | | DWG NO. | 100-6351 |
| | | | SCALE | N/S |
| | | | SHEET | 1 of 3 |